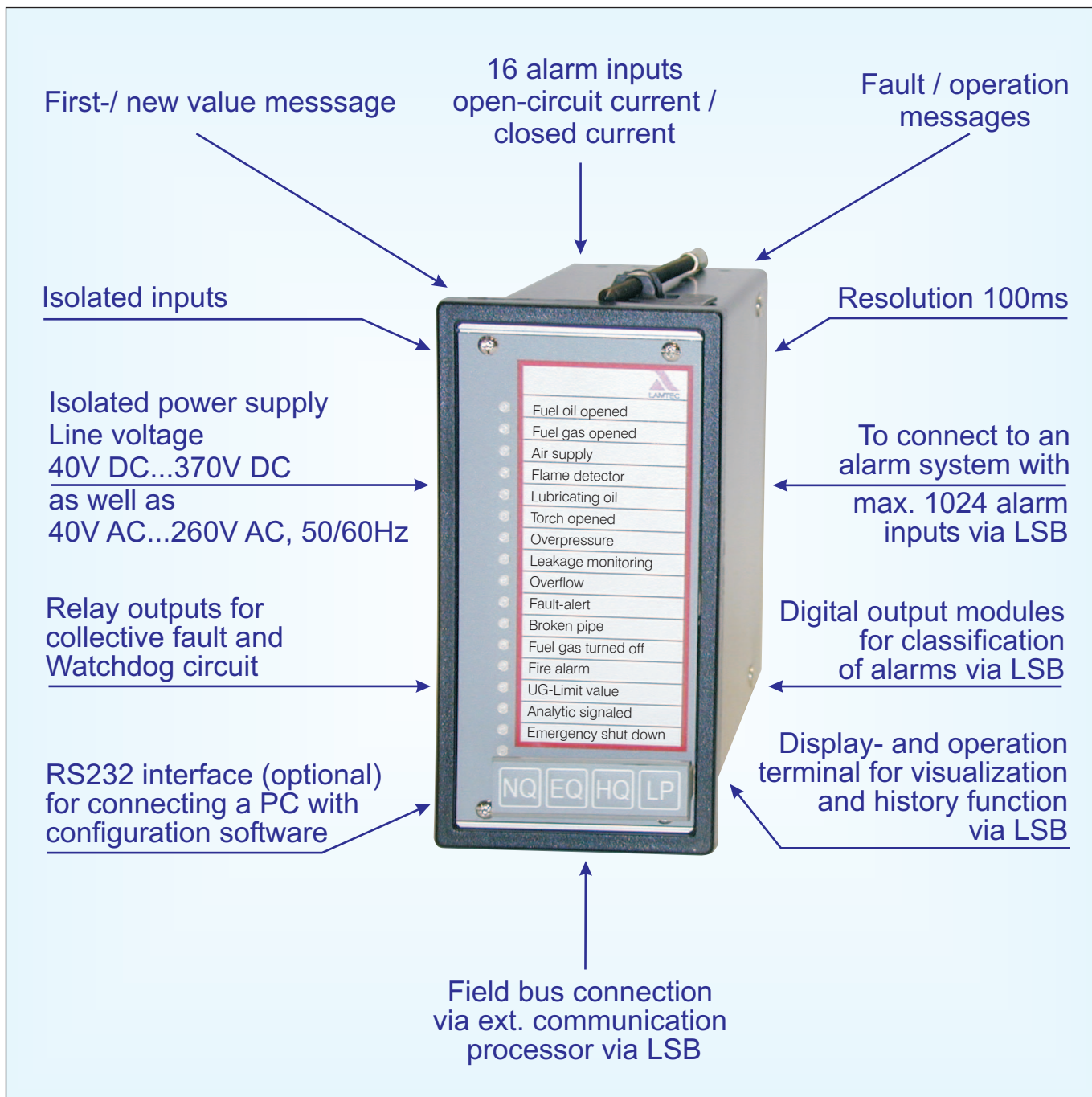


New-signal / First-signal and Process Indicator System NEMS 16

Contactor voltage 12V DC...48V DC
as well as 12V AC...260V AC

NEW
Extended range of
contactor voltage

an innovation out of  - product family



HIGH OPERATIONAL RELIABILITY AND INTERFERENCE IMMUNITY

- 16 separate fault / process indicator inputs
- microprocessor controlled
- interference suppression filter for each input
- interfering voltage immunity acc. to DIN-IEC 0801-4
- electrically isolated inputs
- electrically isolated mains power supply
- network alarm system by LAMTEC SYSTEM BUS. Up to 64 NEMS-16 devices can be connected together (1024 signal inputs).

LOW INSTALLATION COSTS

- For panel mounting with fixing clamps at the side
- Pluggable terminal blocks at the back plane

INDICATOR FUNCTION

- First-/ new value message
- Resolution 100ms
- LED Mirror function
- Contact chatter rejection
- Classification of alarms via groups

INPUTS individually configurable

- 16 alarm inputs, separated in 4x4 groups, which can be connected with normally open/close contacts
12V DC...48V DC
as well as
12V AC...260V AC
- Fault / indicator function
- Open-circuit current / closed current function
- Inputs can be controlled virtual by LAMTEC SYSTEM-BUS
- Bypass function
- Activation delay time 0...1h49min
- External acknowledgement possible

LED-INDICATION

- 1 LED (green) = main power "ON"
- 16 LEDs, two colours
(red) first value = rapid flashing LED
new value = slow flashing LED
(green) process indication = steady light, ON/OFF

INSCRIPTION

- White card strip with clip, for insertion in the front plastic film pocket

COMMUNICATION INTERFACES

- Optional RS 232 or RS 485 by additional module
- LAMTEC SYSTEM BUS (LSB)
- Optional Fieldbus (Profibus, Modbus, Interbus, CANopen)

RELAY OUTPUT

- Two separate relays, each with one isolated contact (SPDT), individually programmable

BUILT-IN BUTTONS

- EQ = Cancels first value signal
- NQ = Cancels new value signal
- HQ = Cancels hooter
- LP = Lamp (LED) test

CLEAR TEXT OUTPUT MESSAGES

Clear text messages on display of

- FMS and ETAMATIC
- Display- and control terminal
- Printer

POWER SUPPLY

- 40V DC...370V DC, as well as
40V AC...260V AC, 50/60Hz

HOSING

- Black sheet steel, size 72 x 144 x 200 mm for instruments panel mounting.
Panel cutout, size 138 x 68 mm
Total weight ca. 1,1 kg
Protection class IP40 at the front (optional IP54)

NEMS 16 software for configuration and text entries

This software can be used to programm comfortable all channel input functions

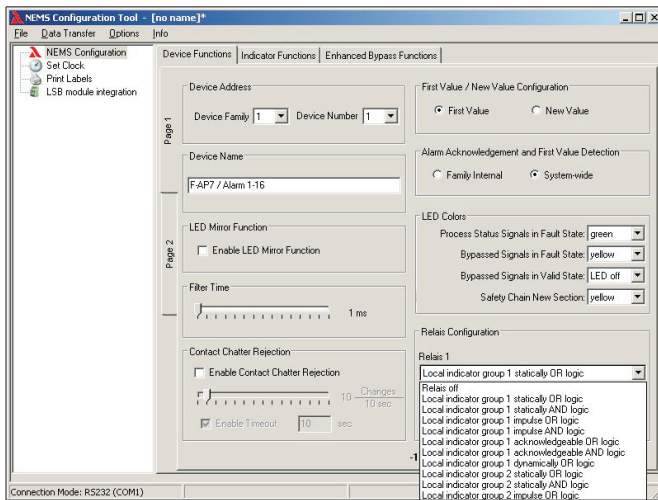


Illustration 1: NEMS 16 system configuration

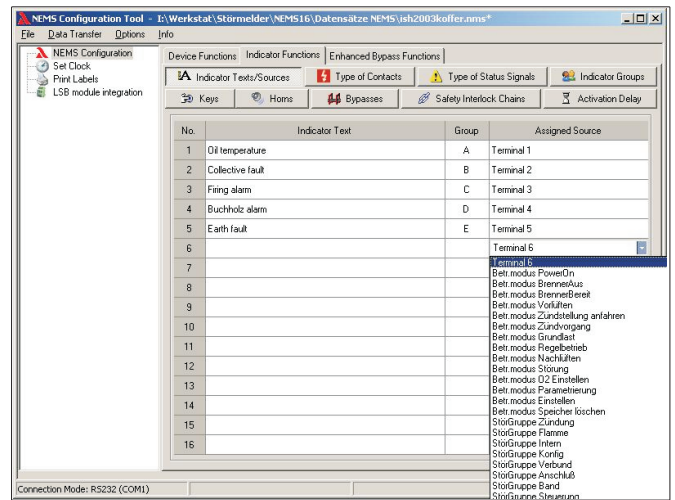
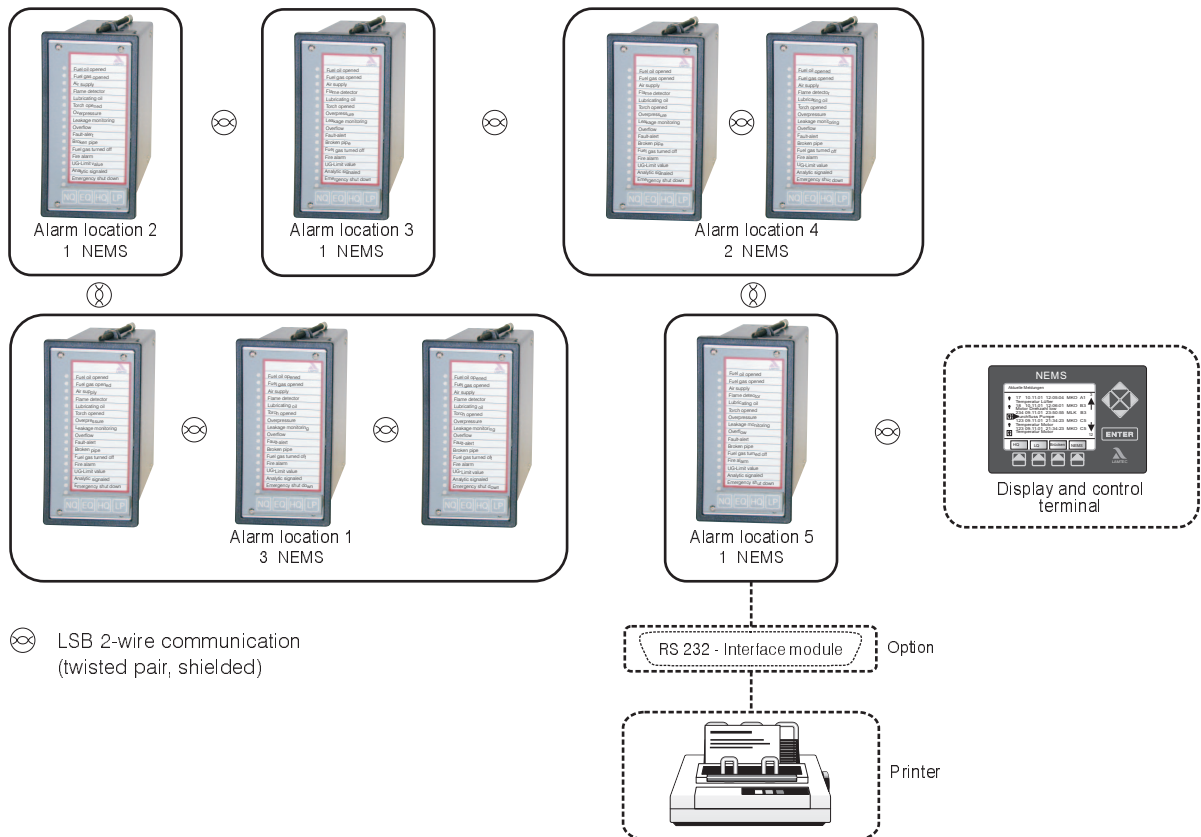
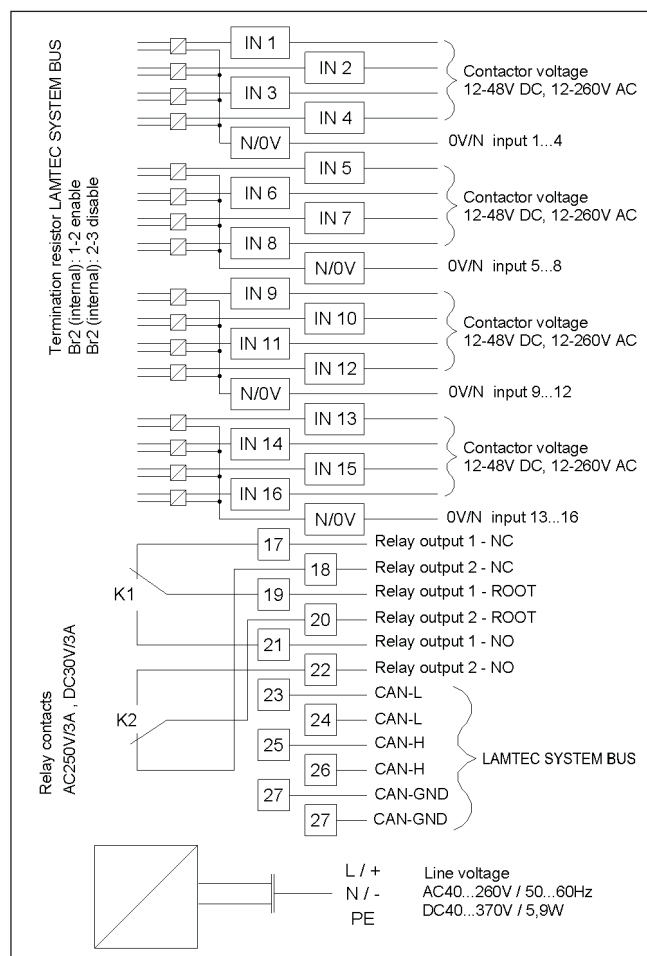


Illustration 2: Channel configuration

NEMS 16 network application via LAMTEC SYSTEM BUS (LSB)



Terminal allocation



Description/Type	Item no.
NEMS 16 230 V AC without RS232 Interface in panel mounting case IP40	6 80 R 1200
NEMS 16 230 V AC with RS232 Interface in panel mounting case IP40, incl. configuration software	6 80 R 1201
Option protection class IP54 in panel mounting case	6 80 R 1013
PC software for NEMS for text input and configuration (incl. LSB/USB converter, for configuration of max. 2 stand-alone NEMS without RS232 interface)	6 80 R 1056
PC software for NEMS for text input and configuration (incl. LSB/USB converter, for configuration of a complet alarm system with max. 64 NEMS)	6 80 R 1052
Display- and control terminal for NEMS (declare line voltage when ordering)	6 80 R 6000
Transistorized 3-fold horn, 230 V AC	LH4/OK-230
Transistorized 3-fold horn, 24 V DC	LH4/OK-24
Thermoprinter with winding device, 82 characters per line, RS 232 Interface, panel mounting, in panel mounting case 24 V DC	6 80 R 1070
Thermoprinter with winding device, 82 characters per line, RS 232 Interface, panel mounting, in panel mounting case 230 V AC	6 80 R 1075
Thermal paper 25m, width 80mm	6 80 R 1098
Radio clock 24 V DC, without antenna	6 80 R 6020
Antenna for radio clock	6 80 R 6025